

# PATIO DOOR—INSTALLATION INSTRUCTIONS



## RECOMMENDATIONS

Our patio doors must be installed level, plumb, square and weather-tight in their openings. Improper installation is the greatest cause of malfunction for patio doors.

To ensure top performance from this product, please follow the installation and maintenance instructions.

## INSTALLATION

1. This product must be installed in conformity with AAMA 2400-10, AAMA 2410-13, IPCB-08 (Window, Door, and Skylight Installation).
2. Ensure that rough opening dimensions exceed those of the new door frame by 1/2 " in width and in height.
3. If the door is to be installed directly on the floor, make sure the surface is straight and level. Otherwise, use shims at both ends and in the center to provide a straight and level base. For doors wider than 8 ft., use five shims.
4. Do not drive nails or screws through the sill as this may allow water penetration, reduce the life of the door, and void the warranty.
5. Complete the frame installation using shims at the head and jambs as illustrated. The shims must be tight enough to prevent the frame corners from being damaged when the frame is fastened to the wall. Frame members must be perfectly straight and square. Check for square by measuring diagonals.
6. Fill in the space around the frame with fiberglass insulation. Do not overfill, as this may jeopardize the insulation's thermal properties and warp the frame members. If urethane foam insulation is to be used, use low expansion foam. We recommend first applying a small amount of material, allowing enough space for expansion. Once the material has expanded, a second application may be done.
7. Use a backer rod and seal the exterior of the door with PVC-compatible caulking.

## MAINTENANCE

1. Do not paint vinyl profiles, hardware parts, or weather strips.
2. Clean vinyl parts using mild soap and a soft cloth (avoid abrasive or ammonia cleaners). Lubricate all hardware parts regularly, and replace any worn out or damaged weather strips.
3. To prevent condensation, make sure there is a heat source in front of the door and no obstruction to air circulation. Maintain a humidity level relative to the outside temperature as recommended by the AAMA 2400 standard.
4. Adjust the operating panel and fly screen as needed using the screws at each bottom corner. (see below)

### Outside temperature Recommended relative humidity

|       |             |
|-------|-------------|
| -20°F | 15% Maximum |
| -10°F | 20% Maximum |
| 0°F   | 25% Maximum |
| 10°F  | 30% Maximum |
| 20°F  | 35% Maximum |
| 30°F  | 40% Maximum |

## FINISHING ADJUSTEMENTS

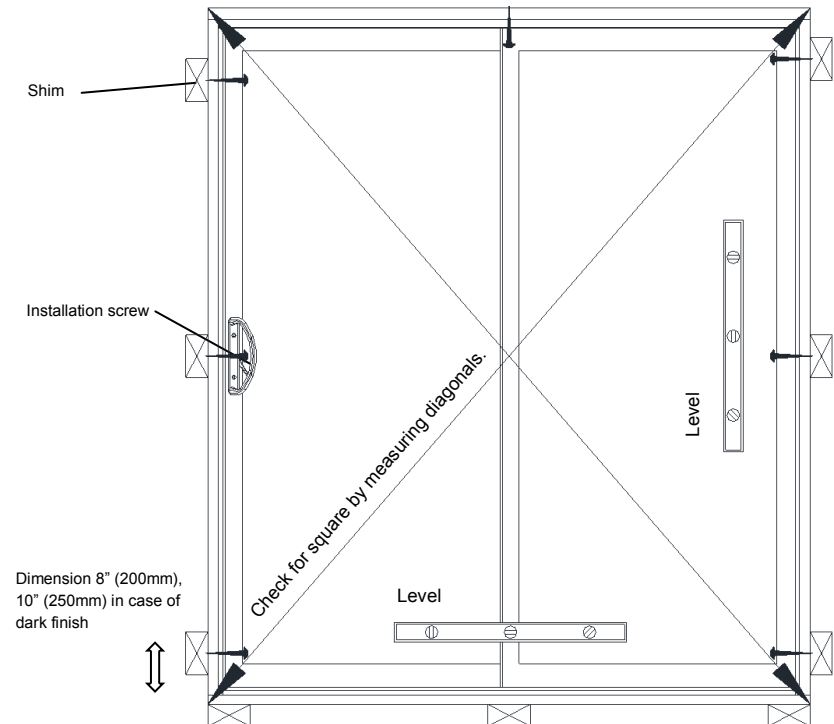
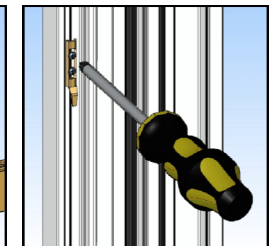
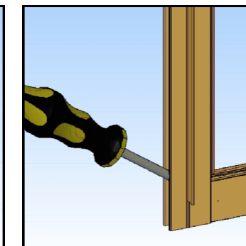
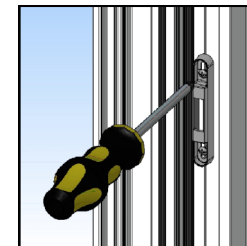
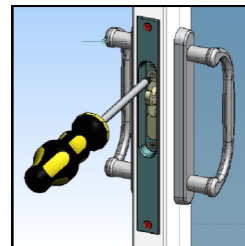
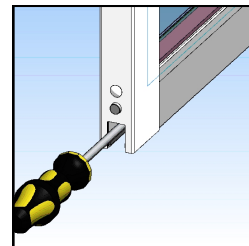
Adjusting the operating sash rollers: Tighten to lift and loosen to lower.

Adjusting the mortise lock (hook).

Adjusting the keeper.

Adjusting the screen rollers.

Adjusting the screen keeper.



*Coastal*

*Industries Inc.*

MANUFACTURERS OF WINDOWS, DOORS & SCREENS